

A Fast and Efficient Tagging Solution

The System 1000 is an attaching tool that allows you to tag 1,000 pieces without stopping to reload. This system accepts reels containing 1,000 fasteners, which is up to twenty times more than standard attaching tools that use clips, saving you time by making tag attaching more efficient. This system offers exceptional tagging capabilities for most general purpose and heavy-duty applications. From apparel and produce tagging to industrial packaging, with the System 1000 you'll experience maximum output, reduced waste, and longer tool life.

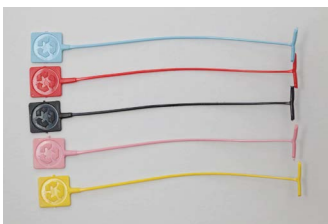


The Reel Deal for Sustainability

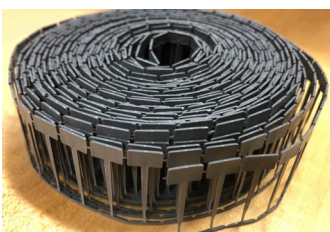
Because this tool utilizes reels of fasteners, not clips, no waste strip gets discarded. You can choose to use our Swiftach® or Ecotach™ fasteners in your application. In addition to this, you can choose from a roll of fasteners made using recycled polyamide (rPA), which is 30% “post-consumer” waste from recycled nylon carpets, or created using 90% “post-consumer” waste from recycled plastic bottles (rPET).



Standard fasteners for System 1000 are available in either nylon or polypropylene. Your selection of the material depends on the tensile strength your application requires.



Ecotach Recycled (rPET) fasteners are made using recycled polyethylene terephthalate (rPET). The fasteners are manufactured by using at least 90% “post-consumer” waste from recycled plastic bottles (rPET) and feature a “Recycled” logo molded onto the paddle for immediate recognition of your sustainability efforts. In addition to this, these are available in many different colors.



Ecoatch Recycled (rPA) fasteners are made using recycled polyamide (rPA). This fastener comprises 30% “post-consumer” waste from recycled nylon carpets.

System 1000 Fasteners									
Material	Style	Class	Part #	Color	Nominal Filament Length	Minimum Tensile Strength	Per Reel Qty	Pkg. Qty	Case Qty
Polypropylene	Paddle	Standard	10332-0	Natural	.43" (11mm)	4.5 lbf (2 Kgf)	1,000	5,000	50,000
Polypropylene	Paddle	Standard	10316-0	Blue	.87" (22mm)	4.5 lbf (2 Kgf)	1,000	5,000	50,000
Polypropylene	Paddle	Standard	10317-0	Green	.87" (22mm)	4.5 lbf (2 Kgf)	1,000	5,000	50,000
Polypropylene	Paddle	Standard	08284-0	Natural	.87" (22mm)	4.5 lbf (2 Kgf)	1,000	5,000	50,000
Polypropylene	Paddle	Standard	10315-0	Red	.87" (22mm)	4.5 lbf (2 Kgf)	1,000	5,000	50,000
Polypropylene	Paddle	Standard	10318-0	Yellow	.87" (22mm)	4.5 lbf (2 Kgf)	1,000	5,000	50,000
Polypropylene	Paddle	Standard	10311-0	Natural	1.25" (32mm)	4.5 lbf (2 Kgf)	1,000	5,000	50,000
Polypropylene	Paddle	Standard	10334-0	Natural	1.5" (38mm)	4.5 lbf (2 Kgf)	1,000	5,000	50,000
Polypropylene	Paddle	Standard	08285-0	Natural	2" (52mm)	4.5 lbf (2 Kgf)	1,000	5,000	50,000
Nylon	Paddle	Standard	11270-0	Natural	0.43" (11mm)	7 lbf (3.2 Kgf)	1,000	5,000	50,000
Nylon	Paddle	Standard	10699-0	Natural	0.59" (15mm)	7 lbf (3.2 Kgf)	1,000	5,000	50,000
Nylon	Paddle	Standard	11271-0	Natural	0.75" (19mm)	7 lbf (3.2 Kgf)	1,000	5,000	50,000
Nylon	Paddle	Standard	10698-0	Natural	0.86" (22mm)	7 lbf (3.2 Kgf)	1,000	5,000	50,000
Nylon	Paddle	Standard	10418-0	Natural	1.0" (26mm)	7 lbf (3.2 Kgf)	1,000	5,000	50,000
Nylon	Paddle	Standard	11272-0	Natural	1.25" (32mm)	7 lbf (3.2 Kgf)	1,000	5,000	50,000
Nylon	Paddle	Standard	10415-0	Natural	1.5" (38mm)	7 lbf (3.2 Kgf)	1,000	5,000	50,000
Nylon	Paddle	Standard	11273-0	Natural	1.75" (44mm)	7 lbf (3.2 Kgf)	1,000	5,000	50,000
Nylon	Paddle	Standard	11005-0	Natural	2.0" (52mm)	7 lbf (3.2 Kgf)	1,000	5,000	50,000
Nylon	Paddle	Standard	11260-0	Natural	2.25" (57mm)	7 lbf (3.2 Kgf)	1,000	5,000	50,000
Nylon	Paddle	Standard	11261-0	Natural	2.55" (65mm)	7 lbf (3.2 Kgf)	1,000	5,000	50,000
Nylon	Paddle	Standard	11262-0	Natural	2.75" (70mm)	7 lbf (3.2 Kgf)	1,000	5,000	50,000
Nylon	Paddle	Standard	11263-0	Natural	3.0" (76mm)	7 lbf (3.2 Kgf)	1,000	5,000	50,000
rPET 95%PCW	Paddle	Standard	17015-0	Natural	1.6" (41mm)	4.0 lbf (1.8 Kgf)	834	5,000	50,000
rPET 95%PCW	Paddle	Standard	17016-0	Black/Black	1.6" (41mm)	4.0 lbf (1.8 Kgf)	834	5,000	50,000
rPET 95%PCW	Paddle	Standard	17017-0	White/White	1.6" (41mm)	4.0 lbf (1.8 Kgf)	834	5,000	50,000
rPET 95%PCW	Paddle	Standard	17001-0	White/White	2.6" (65mm)	4.0 lbf (1.8 Kgf)	834	5,000	50,000
rPET 95%PCW	Paddle	Standard	17002-0	Yellow/107C	2.6" (65mm)	4.0 lbf (1.8 Kgf)	834	5,000	50,000
rPET 95%PCW	Paddle	Standard	17003-0	Orange/172C	2.6" (65mm)	4.0 lbf (1.8 Kgf)	834	5,000	50,000
rPET 95%PCW	Paddle	Standard	17004-0	Pink/210C	2.6" (65mm)	4.0 lbf (1.8 Kgf)	834	5,000	50,000
rPET 95%PCW	Paddle	Standard	17005-0	Red/186C	2.6" (65mm)	4.0 lbf (1.8 Kgf)	834	5,000	50,000
rPET 95%PCW	Paddle	Standard	17006-0	LT Green/346C	2.6" (65mm)	4.0 lbf (1.8 Kgf)	834	5,000	50,000
rPET 95%PCW	Paddle	Standard	17007-0	Green/347C	2.6" (65mm)	4.0 lbf (1.8 Kgf)	834	5,000	50,000
rPET 95%PCW	Paddle	Standard	17008-0	LT Blue/291C	2.6" (65mm)	4.0 lbf (1.8 Kgf)	834	5,000	50,000
rPET 95%PCW	Paddle	Standard	17009-0	DK Blue/286C	2.6" (65mm)	4.0 lbf (1.8 Kgf)	834	5,000	50,000
rPET 95%PCW	Paddle	Standard	17010-0	Brown/4655C	2.6" (65mm)	4.0 lbf (1.8 Kgf)	834	5,000	50,000
rPET 95%PCW	Paddle	Fine Fabric	17011-0	Gray/429C	2.6" (65mm)	4.0 lbf (1.8 Kgf)	834	5,000	50,000
rPET 95%PCW	Paddle	Fine Fabric	17012-0	Black/Black	2.6" (65mm)	4.0 lbf (1.8 Kgf)	834	5,000	50,000
rPET 95%PCW	Paddle	Fine Fabric	17013-0	Natural	2.6" (65mm)	4.0 lbf (1.8 Kgf)	834	5,000	50,000
rPA 30%PCW	Paddle	Standard	17180-0	Gray	0.43" (11mm)	7 lbf (3.2 Kgf)	1,000	5,000	50,000
rPA 30%PCW	Paddle	Standard	17181-0	Gray	0.50" (13mm)	7 lbf (3.2 Kgf)	1,000	5,000	50,000
rPA 30%PCW	Paddle	Standard	17182-0	Gray	0.76" (19mm)	7 lbf (3.2 Kgf)	1,000	5,000	50,000
rPA 30%PCW	Paddle	Standard	17183-0	Gray	1.02" (26mm)	7 lbf (3.2 Kgf)	1,000	5,000	50,000
rPA 30%PCW	Paddle	Standard	17184-0	Gray	1.25" (32mm)	7 lbf (3.2 Kgf)	1,000	5,000	50,000
rPA 30%PCW	Paddle	Standard	17185-0	Gray	1.65" (42mm)	7 lbf (3.2 Kgf)	1,000	5,000	50,000
rPA 30%PCW	Paddle	Standard	17186-0	Gray	1.73" (44mm)	7 lbf (3.2 Kgf)	1,000	5,000	50,000
rPA 30%PCW	Paddle	Standard	17187-0	Gray	2.02" (51mm)	7 lbf (3.2 Kgf)	1,000	5,000	50,000

Application & Tool Versatility

The System 1000 tool is available in a variety of configurations including handheld, automated power units, and bench mount.



10000-4

The System 1000 hand tagging gun features a unique mechanism that helps prevent gun jams maximizing productivity. It's both fast and worry-free. The tool also has a feed track opening that makes it easier to enter the fasteners into the feed wheel during fastener reloading. The ergonomic handle is a molded high quality, impact-resistant polycarbonate material.



SPU15M

A System 1000 Swiftach Power Unit (SPU) can increase productivity, especially when it's faster to bring the items or garments to the tool. This module is pneumatic, powered by air compression. You can custom build your fastening or tagging system by selecting a needle type, a fastener type, and desired actuation. These modules can be bench mounted or installed into an actuator. This module, SPU15M, is ideal for garments like socks or items with a compression thickness up to 76mm. Another module, SPU5M, is suitable for items with a compression thickness up to 38mm.



SPU5P

Swiftach Power Units (SPUs) have also been popular with tagging produce. The advantages are the increased tagging speed because it is a lightweight aluminum pneumatic tagging gun actuated by a finger trigger. This module, SPU5P, is ideal for pineapple tagging.



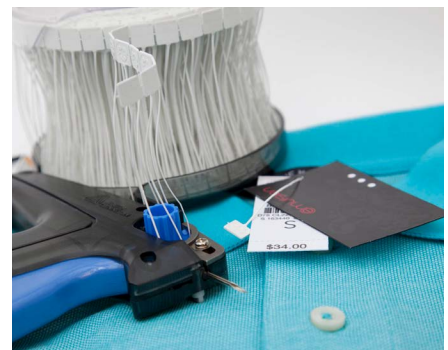
11229-0

The System 1000 Bench Mount Hosiery System is a specialized packaging solution that features an adjustable plate that varies the penetration depth of the needle to enable flexibility for a range of material thicknesses and packaging configurations. The needle diameter is specially designed to be ultra-long and the smallest diameter needle of any System 1000 solution, so it doesn't damage the material, no matter how thick. This pneumatic driven tool provides speed and easy finger switch actuation.

System 1000 Tools					
Part #	Class	Item Description	Actuation	Features	Pkg Qty
10000-4	Standard	System 1000 Hand Tool	Handheld	A unique mechanism incorporated into the design helps prevent jams	1
SPU5P	Standard	System 1000 industrial Pneumatic	Pneumatic	Lightweight, durable aluminum tool is handheld but pneumatically actuated	1
SPU15M	Standard	System 1000 industrial Pneumatic	Pneumatic	Ideal or compression thickness up to 76 mm	1
SPU5M	Standard	System 1000 industrial Pneumatic	Pneumatic	Ideal or compression thickness up to 38 mm	1
11229-0	Standard	System 1000® Bench Mount Hosiery System	Pneumatic	The adjustable stand allows for effective needle length flexibility and the large clear shield provides operator safety	1

System 1000 Needles									
Part #	Class	Item Description	Tool	Material	Overall Length	Effective Length	Outside Diameter	Shortest Effective Fastener	Pkg Qty
08941-0 05012-0*	Heavy Duty	Heavy-Duty Plastic Base	Handheld	Plastic Base	1.30 (33 mm)	.51 (13 mm)	.075 (1.9 mm)	.51" (13 mm)	4
08913-0	Heavy Duty	Heavy-Duty Stainless Steel	Handheld	All Steel	1.40 (35 mm)	.51 (13 mm)	.090 (2.3 mm)	.51" (13 mm)	4
10693-0	Heavy Duty	Heavy-Duty Stainless Steel	Handheld	All Steel	1.40 (35 mm)	.51 (13 mm)	.090 (2.3 mm)	.51" (13 mm)	4
10074-0 05031-0*	Heavy Duty	Short Heavy-Duty All Steel	Pneumatic: SPU5M or SPU5P	All Steel	1.34 (34 mm)	.51 (13 mm)	.090 (2.3 mm)	.51" (13 mm)	4
10641-0 05034-0*	Heavy Duty	Long Heavy-Duty All Steel	Pneumatic: SPU5M or SPU5P	All Steel	1.84 (47 mm)	1 (25 mm)	.090 (2.3 mm)	1.00" (25 mm)	4
10642-0 05035-0*	Heavy Duty	Extra Long Heavy-Duty All Steel	Pneumatic: SPU5M or SPU5P	All Steel	2.32 (59 mm)	1.5 (38 mm)	.090 (2.3 mm)	1.50" (38 mm)	4
11025-0	Standard	Needle Kit (made exclusively for pine-apple tagging, check with factory for application assistance)	Pneumatic: SPU5M or SPU5P	All Steel	1" (25.4 mm)	.37" (9.5 mm)	.11" (2.75 mm)	.37" (9.5 mm)	4
SPU15N	Standard	Needle, S1000 IND'L, .85 mm, soft tip	Pneumatic: 11229 or SPU15M	All Steel	3.34 (85 mm)	2.63 (67 mm)	0.078 (2 mm)	0.43" (11 mm)	1 each

* European part number



USA & CANADA

224 Industrial Road
Fitchburg, MA 01420
Tel +978 345 8100 (direct)
Tel +800 225 5913
Fax +800 848 2169

LATIN AMERICA

Aristóteles #123
Parque Industrial Kalos
Apodaca, Nuevo León
66600 México
Tel +52 (81) 3348 0700
Fax +52 (81) 8864 4101

ASIA

No. 7 Chun Ying Street
Tseung Kwan O
Industrial Estate
New Territories, Hong Kong
Tel +852 2372 3000
Fax +852 2873 6436

EUROPE, MIDDLE EAST & AFRICA

1 Thomas Road
Wooburn Green
Bucks HP10 0PE
Tel +(44) 1628 859500
Fax +(44) 1628 859567

fastener.averydennison.com

fastener@averydennison.com ✉